



7:15 am to 8:15 am

- Outgoing Run Route
- Return Run Route
- Vehicle Detour
- Barricade Close Road
- POLICE

**Mile 1.75**  
First Runner 7:39 am  
Last Runner 8:13 am

Detour to F St.

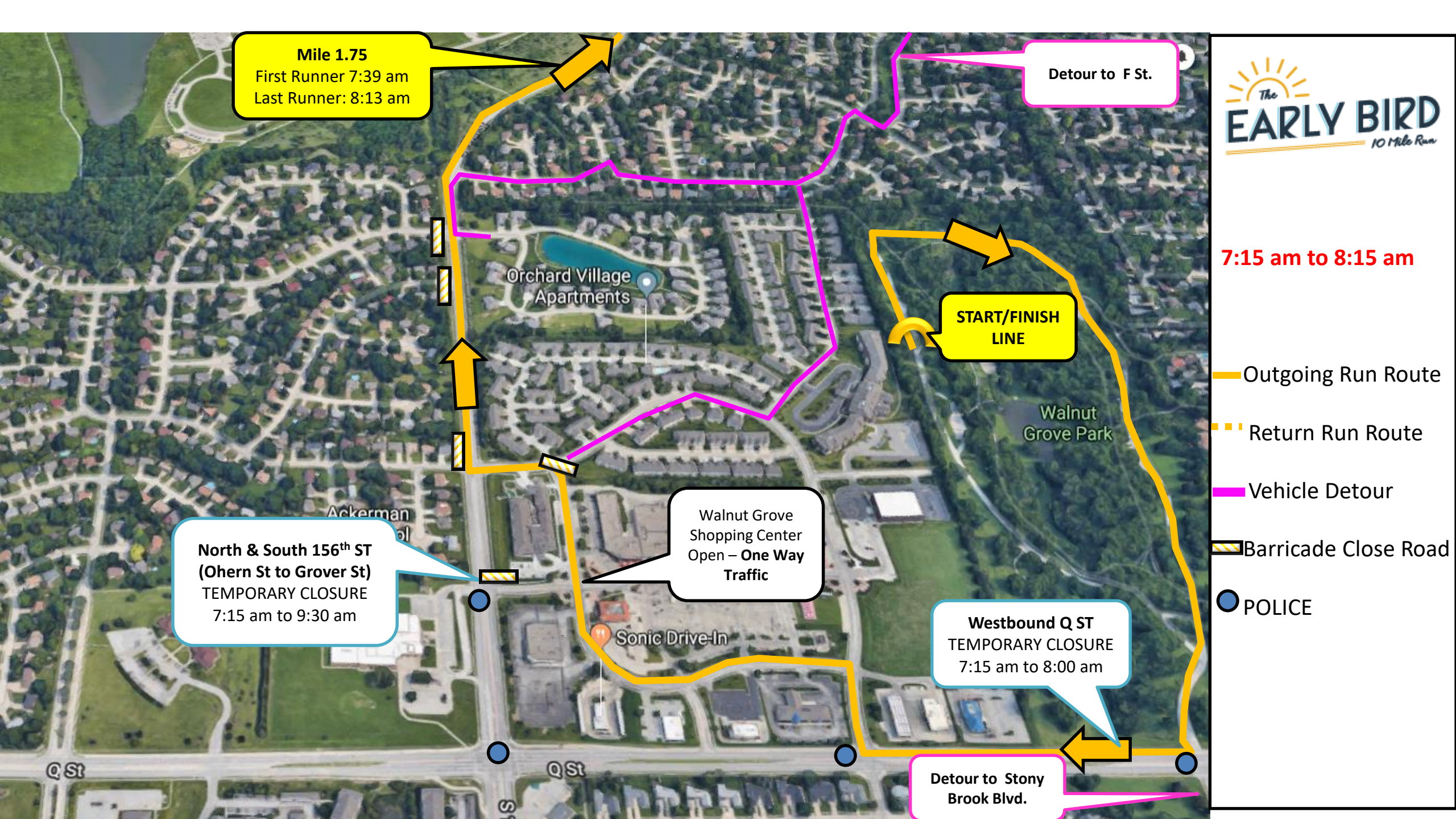
**START/FINISH LINE**

**North & South 156<sup>th</sup> ST  
(Ohern St to Grover St)  
TEMPORARY CLOSURE  
7:15 am to 9:30 am**

Walnut Grove Shopping Center  
Open – **One Way Traffic**

**Westbound Q ST  
TEMPORARY CLOSURE  
7:15 am to 8:00 am**

Detour to Stony Brook Blvd.





8:15 am to 9:30 am

Outgoing Run Route

Return Run Route

Vehicle Detour

Barricade Close Road

POLICE

Mile 9.5  
First Runner 8:18 am  
Last Runner: 10:45 am

Return to house via  
Q St using Lakeshore  
Dr. To Rolling Ridge

North & South 156<sup>th</sup> ST  
(Ohern St to Grover St)  
TEMPORARY CLOSURE  
7:15 am to 9:30 am

Walnut Grove  
Shopping Center  
Open

START/FINISH  
LINE

Detour Exit to Q  
St.

