



7:15 am to 8:15 am

— Outgoing Run Route

— Return Run Route

— Vehicle Detour

▬ Barricade Close Road

● POLICE

Detour from F St.
(if entering
between 7:35 to
7:50 am)

START/FINISH
LINE

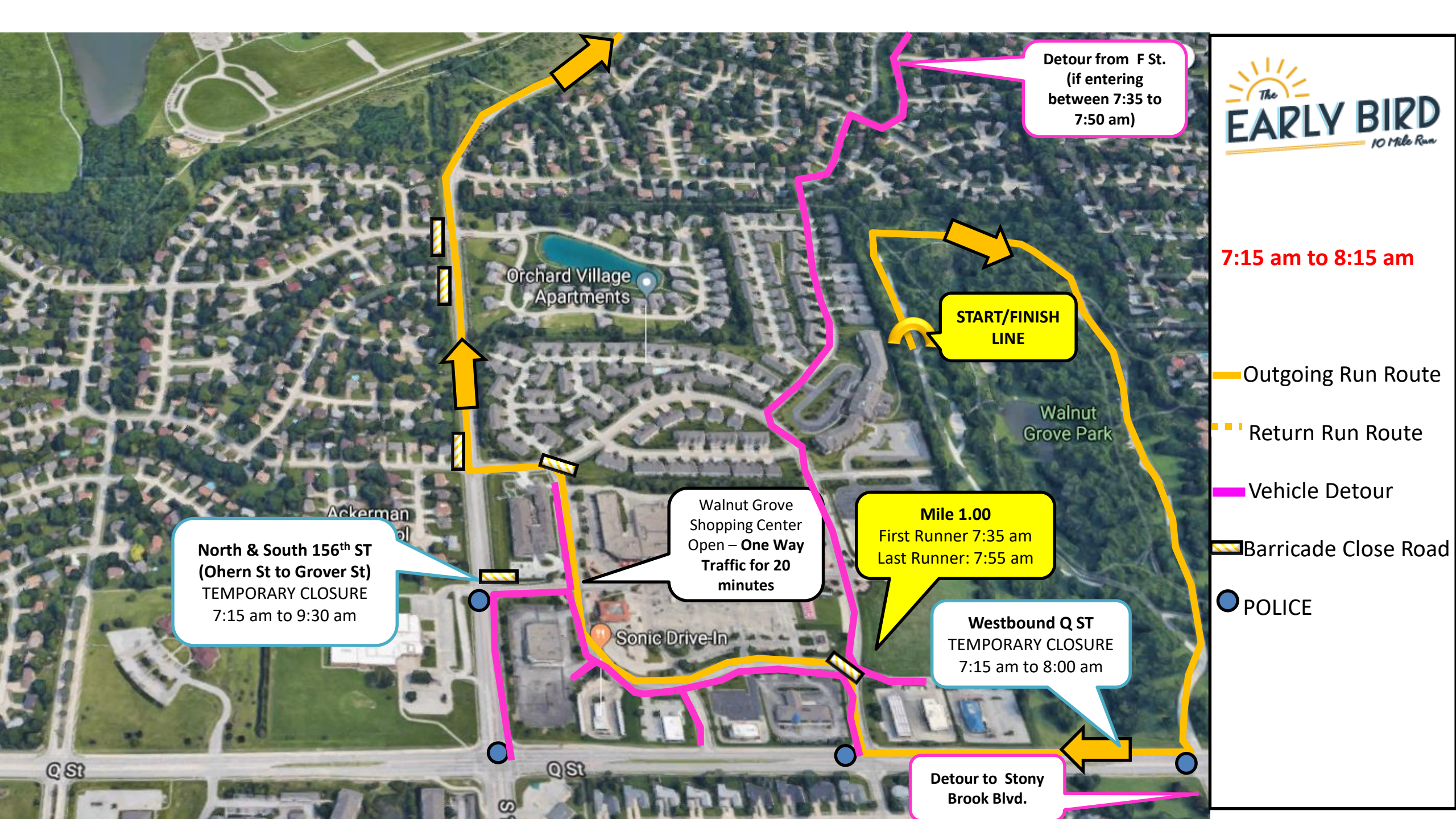
Mile 1.00
First Runner 7:35 am
Last Runner: 7:55 am

Westbound Q ST
TEMPORARY CLOSURE
7:15 am to 8:00 am

Detour to Stony
Brook Blvd.

Walnut Grove Shopping Center
Open – One Way
Traffic for 20
minutes

North & South 156th ST
(Ohern St to Grover St)
TEMPORARY CLOSURE
7:15 am to 9:30 am





8:15 am to 9:30 am

— Outgoing Run Route

— Return Run Route

— Vehicle Detour

— Barricade Close Road

● POLICE

